

Feature Description Document

Best Practices for Creating a Sync Group



Purpose

This document will describe the best practices for grouping the user, devices & sync group.

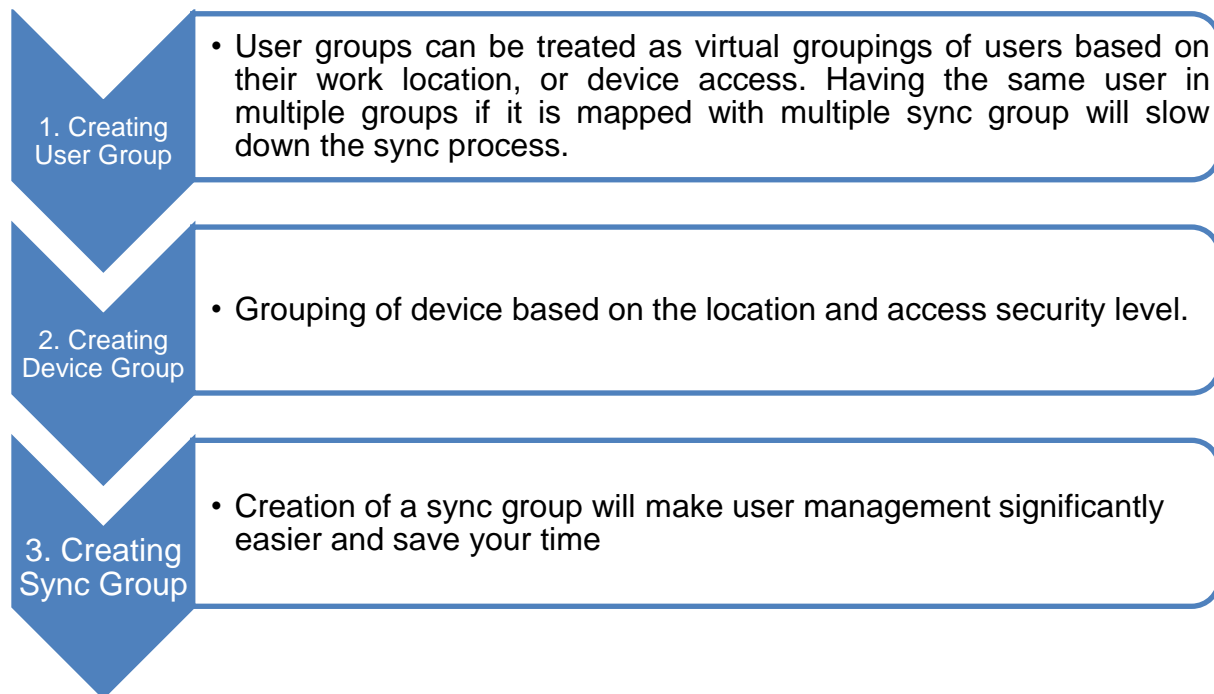
Applies to

TITAN	TFACE	TOUCH 2	SENSE 2	MERGE 2	MYCRO
All Devices	All Devices	All Devices	All Devices	All Devices	All Devices

Sync Group

In this document, we will review the best practices to create the sync group and its mapping. A Sync group is used to manage the user profile. Access on the device can be easily controlled with the help of the sync group.

Steps involved in creating a sync group:



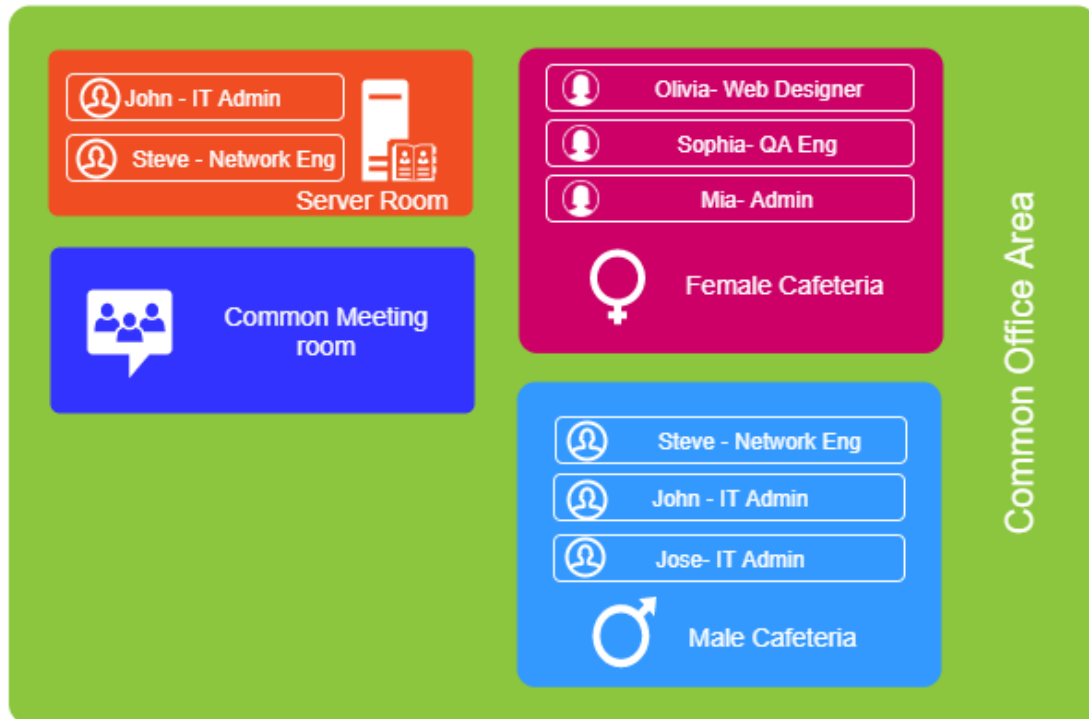
Common Grouping Strategies

There isn't one right way to group your devices and users, but there are a couple of common ways to approach grouping that make things more efficient. Keep in mind that it is usually not too difficult to change how your devices and users are grouped so there is room for fine-tuning to ensure your device group structure is the best fit for your environment and will give the best performance.

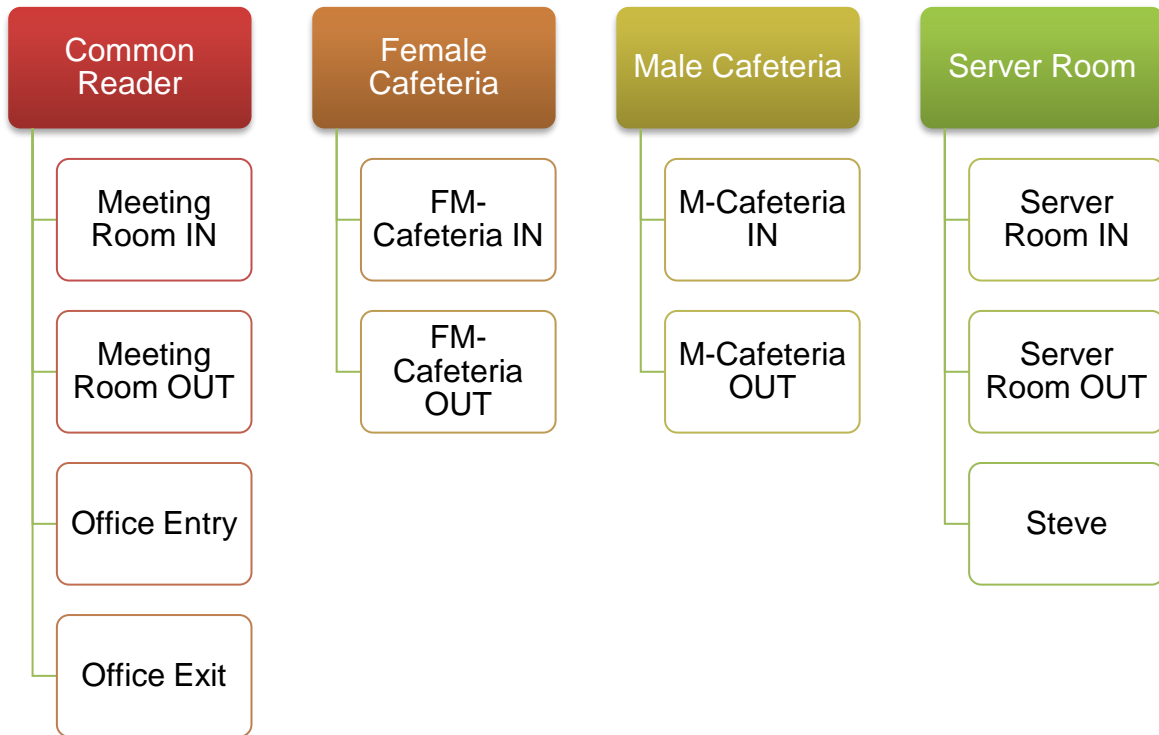
- It is recommended to always create a sync group with unique users.
- A device should be part of only one device group.
- Always try to maintain the minimum number of sync groups in IXM WEB.

Grouping Example

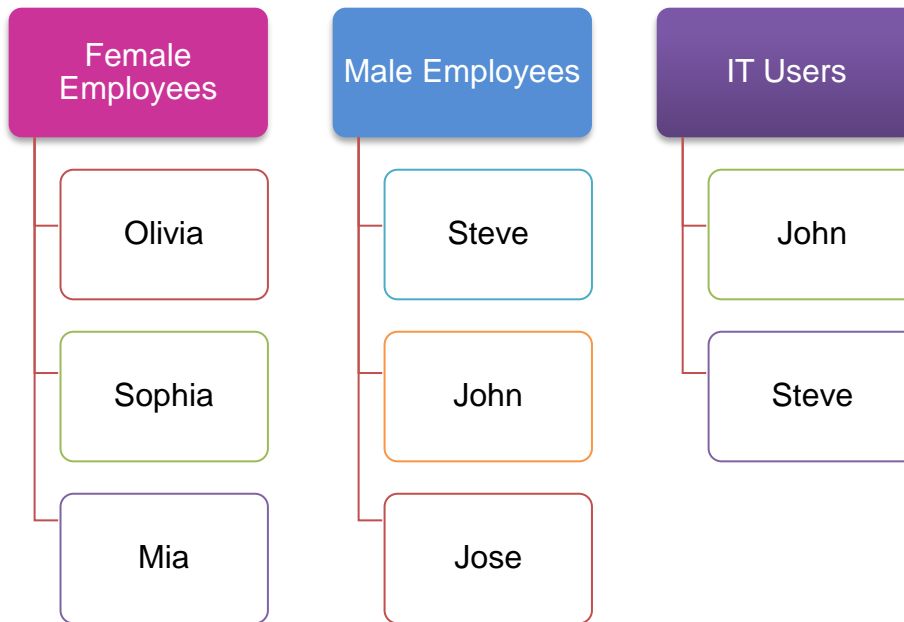
With the help of the below use case, you will be able to get a better idea of sync configuration.



- In the above example, we should be grouping the users as shown below.



- And device grouping should be followed as below:



- After creating the user and device group, the next step is to create a sync group.

Sync-Common

- **User Group**
 - Male Employees
 - Female Employees
- **Device Group**
 - Common Reader

Female User

- **User Group**
 - Female Employees
- **Device Group**
 - Female Cafeteria

Male User

- **User Group**
 - Male Employees
- **Device Group**
 - Male Cafeteria

Server Room

- **User Group**
 - IT User
- **Device Group**
 - Server Room



Support

For more information relating to this Feature Description document, please contact us at support@invixium.com

Disclaimers and Restrictions

This document and the information described throughout are provided in their present condition and are delivered without written, expressed, or implied commitments by Invixium Inc. and are subject to change without notice. The information and technical data herein are strictly prohibited for the intention of reverse engineering and shall not be disclosed to parties for procurement or manufacturing.

This document may contain unintentional typos or inaccuracies.

TRADEMARKS

The trademarks specified throughout the document are registered trademarks of Invixium Access Inc. All third-party trademarks referenced herein are recognized to be trademarks of their respective holders or manufacturers.

Copyright © 2022, INVIXIUM. All rights reserved.